

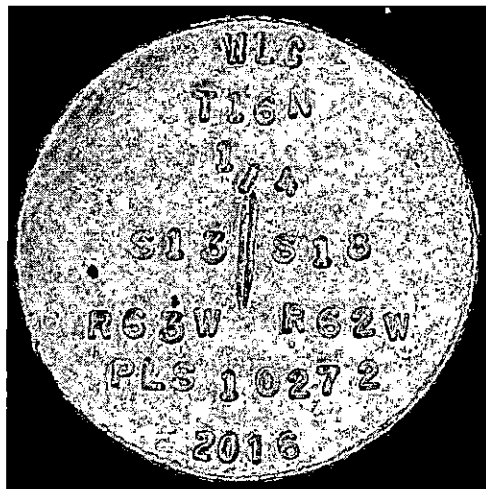
# State of Wyoming Corner Record

(In compliance with the *CORNER PERPETUATION AND FILING ACT*, Wyoming Statutes, 1997 Section 33-29-140 et. seq., and the Rules and Regulations of the Board of Professional Engineers and Professional Land Surveyors)

Reverse side of this form may be used if more space is needed.

Record of original survey and citation of source of historical information (if corner is lost or obliterated). Description of corner monumentation evidence found and/or monument and accessories established to perpetuate the location of this corner. Sketch of relative location of monument, accessories, and reference points with course and distance to adjacent corner(s) (if determined in this survey). Method and rationale for reestablishment of lost or obliterated corner.

SET: 2-1/2" ALUMINUM CAP ON 5/8"X24" REBAR, 12" BELOW ROAD GRADE, ±18' SOUTH OF O.H.P. CROSSING. ±2' WEST OF CENTERLINE TRAVEL WAY OF COUNTY ROAD 148. NORTH-SOUTH FENCES ALONG ROAD 32.0' EACH WAY.



SEE OTHER SIDE FOR SECTION BREAKDOWN.



RECP #: 685866

RECORDED 6/10/2016 AT 12:07 PM BK# 2504 PG# 322  
Debra K. Lathrop, CLERK OF LARAMIE COUNTY, WY PAGE 1 OF 2



NAD 83/2011  
LAT- 41°21'11.4"N  
LONG- 104°22'05.5"W  
LARAMIE COUNTY, WYO

BEARINGS AND DISTANCES ARE GRID.  
WYO. STATE PLANE, EAST ZONE.

NO SCALE

Date of Field Work: 05-26-16

Office Reference: W.O.# 16023-02 FB# 1183 PG# 40 PT# 2022

## Cross Index Plat

	1	2	3	4	5	6	7	8	9	10	11	12	13	14	15	16	17	18	19	20	21	22	23	24	25
A	+	+	+	+	+	+	+	+	+	+	+	+	+	+	+	+	+	+	+	+	+	+	+	+	+
B	+	6	+	5	+	4	+	3	+	2	+	1	+	+	+	+	+	+	+	+	+	+	+	+	+
C	+	+	+	+	+	+	+	+	+	+	+	+	+	+	+	+	+	+	+	+	+	+	+	+	+
D	+	+	+	+	+	+	+	+	+	+	+	+	+	+	+	+	+	+	+	+	+	+	+	+	+
E	+	+	+	+	+	+	+	+	+	+	+	+	+	+	+	+	+	+	+	+	+	+	+	+	+
F	+	+	+	+	+	+	+	+	+	+	+	+	+	+	+	+	+	+	+	+	+	+	+	+	+
G	+	7	+	8	+	9	+	10	+	11	+	12	+	+	+	+	+	+	+	+	+	+	+	+	+
H	+	+	+	+	+	+	+	+	+	+	+	+	+	+	+	+	+	+	+	+	+	+	+	+	+
J	+	+	+	+	+	+	+	+	+	+	+	+	+	+	+	+	+	+	+	+	+	+	+	+	+
K	+	+	+	+	+	+	+	+	+	+	+	+	+	+	+	+	+	+	+	+	+	+	+	+	+
L	●	18	+	17	+	16	+	15	+	14	+	13	+	+	+	+	+	+	+	+	+	+	+	+	+
M	+	+	+	+	+	+	+	+	+	+	+	+	+	+	+	+	+	+	+	+	+	+	+	+	+
N	+	+	+	+	+	+	+	+	+	+	+	+	+	+	+	+	+	+	+	+	+	+	+	+	+
O	+	+	+	+	+	+	+	+	+	+	+	+	+	+	+	+	+	+	+	+	+	+	+	+	+
P	+	19	+	20	+	21	+	22	+	23	+	24	+	+	+	+	+	+	+	+	+	+	+	+	+
Q	+	+	+	+	+	+	+	+	+	+	+	+	+	+	+	+	+	+	+	+	+	+	+	+	+
R	+	+	+	+	+	+	+	+	+	+	+	+	+	+	+	+	+	+	+	+	+	+	+	+	+
S	+	+	+	+	+	+	+	+	+	+	+	+	+	+	+	+	+	+	+	+	+	+	+	+	+
T	+	30	+	29	+	28	+	27	+	26	+	25	+	+	+	+	+	+	+	+	+	+	+	+	+
U	+	+	+	+	+	+	+	+	+	+	+	+	+	+	+	+	+	+	+	+	+	+	+	+	+
V	+	+	+	+	+	+	+	+	+	+	+	+	+	+	+	+	+	+	+	+	+	+	+	+	+
W	+	+	+	+	+	+	+	+	+	+	+	+	+	+	+	+	+	+	+	+	+	+	+	+	+
X	+	31	+	32	+	33	+	34	+	35	+	36	+	+	+	+	+	+	+	+	+	+	+	+	+
Y	+	+	+	+	+	+	+	+	+	+	+	+	+	+	+	+	+	+	+	+	+	+	+	+	+
Z	+	+	+	+	+	+	+	+	+	+	+	+	+	+	+	+	+	+	+	+	+	+	+	+	+

Firm/Agency, Address

PAUL R. SVENSON  
WLC  
200 PRONGHORN  
CASPER, WY 82601  
Telephone Number: 307-266-2524

This corner record was prepared by me or under my direction and supervision.

SEAL & SIGNATURE

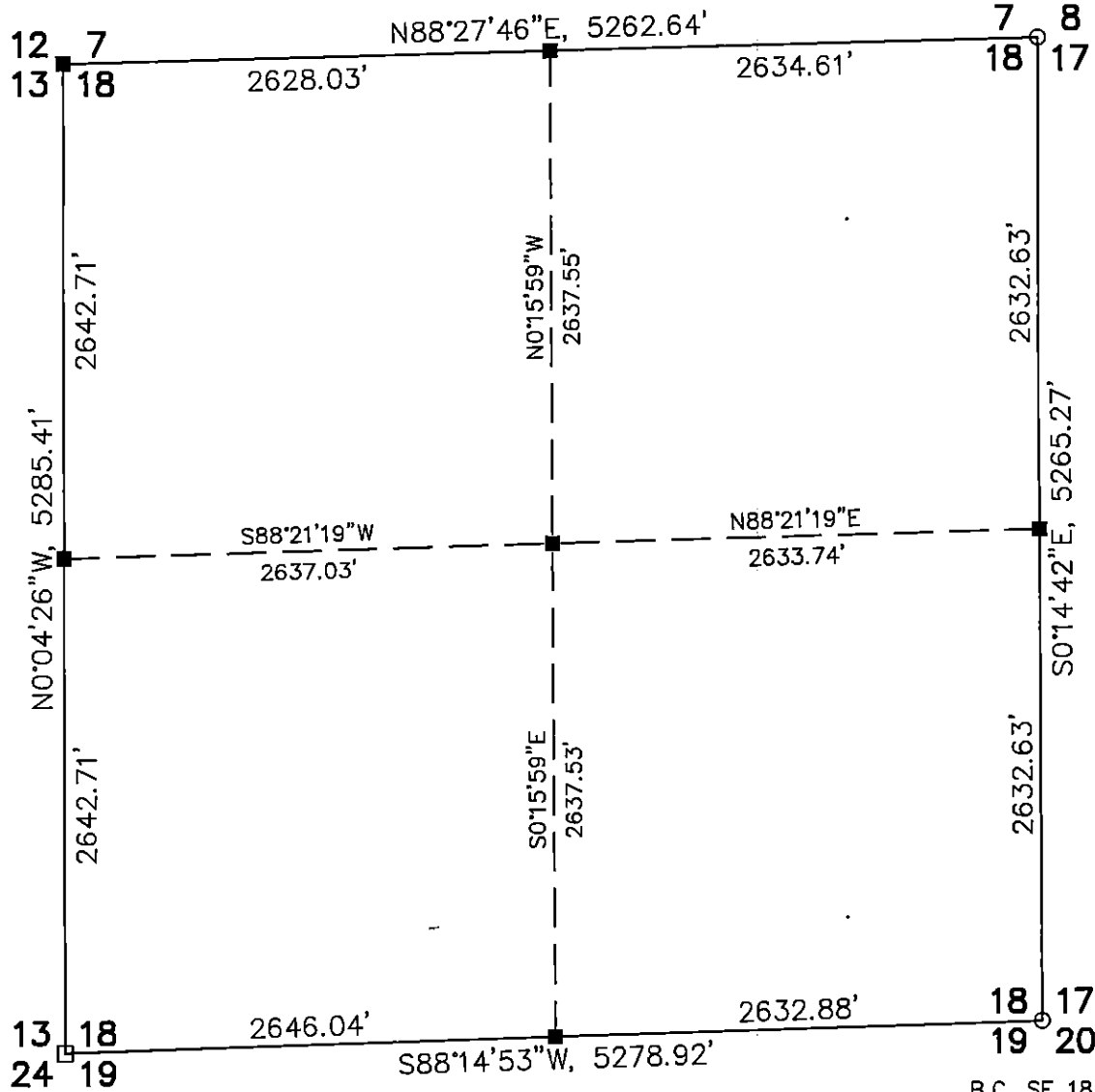


Corner Name West 1/4 Corner Section 18, T 16 N, R 62 W, 6th P.M.

Cross-Index No.: L-1

County: Laramie, Wyoming

B.C. NE 18 REFER TO  
LS 2927  
COR. REC. 2009  
REC.# 518599



B.C. SE 18 REFER TO  
LS 2927  
COR. REC. 2009  
REC.# 518598



RECP #: 685866

RECORDED 6/10/2016 AT 12:07 PM BK# 2504 PG# 322 A  
Debra K. Lathrop, CLERK OF LARAMIE COUNTY, WY PAGE 2 OF 2



NO SCALE